



Foundations Revealed Competition 2023

Entrant's Pack and Rules

The Natural World

Nature has been a source of inspiration for designers and creators for millennia. You could choose to recreate a special location, the changing seasons, a natural phenomenon, or the texture and colour of your favourite flower. Escape into nature and be uplifted by twisted branches, crashing waves, dew-covered spider's webs, and falling autumn leaves. This is your chance to showcase how nature inspires you.

<https://www.pinterest.co.uk/foundationsrevealed/the-natural-world/>

#FoundationsRevealedCompetition2023

Table of Contents

The Prizes	3
Voting	4
Competition Timetable	5
What You'll Need To Enter	6
THE ENTRY FORM	7
TEXT	9
IMAGES.....	10
Examples Of Past Entries	12
AGNIESZKA, WITCH OF THE VALLEY – APPRENTICE.....	13
ALICE'S ADVENTURES IN CERN – INTERMEDIATE	14
DIVINE PUFFED SLEEVES – APPRENTICE.....	15
MAGRAT'S GREEN DRESS – APPRENTICE	16
NØKKEN THE WATER SPIRIT – EXPERIENCED.....	17
THE WEAVER GIRL – INTERMEDIATE.....	18
Skill Levels.....	19
BEGINNER:	19
APPRENTICE:	20
INTERMEDIATE:.....	21
EXPERIENCED:	22
ARTISAN:	23
The Legal Bit	24

The Prizes

The Prizes are awarded to each skill level.

First Place

- A US \$400 gift certificate for the online store(s) of their choice.
- One-year free Academy membership to Foundations Revealed.
- A Special 'Winner' icon to place on their website, blog, and/or member's profile.

Second Place

- A US \$200 gift certificate for the online store(s) of their choice.
- Six months free Academy membership to Foundations Revealed.
- A special '2nd Place' icon to place on their website, blog, and/or member's profile.

Third Place

- A US \$100 gift certificate for the online store(s) of their choice.
- Three months free Academy membership to Foundations Revealed.
- A special '3rd Place' icon to place on their website, blog, and/or member's profile.

Shortlisted Finalists (other than first, second, and third places)

- Three months free Library Pass to the Foundations Revealed website.
- A special 'Finalist' icon to place on their website, blog, and/or member's profile.

Other prizes may be awarded at Foundations Revealed's discretion.

Choice of online store(s) is subject to conditions, including but not limited to: must accept payment from a UK company and must have gift cards for sale online without special arrangements being made by email. The gift certificate may be split up to three times (two for 3rd prize), as long as each voucher is worth a minimum of US\$50.00. Prizes are non-exchangeable, non-transferable, and are not redeemable for cash or other prizes. All prizes must be claimed by Friday 18th of August 2023, 6:00 p.m. BST.

This Competition is open to international Entries and Harman Hay Publications Ltd is not responsible for paying taxes on any prizes awarded. Please check with the tax authority for your jurisdiction on whether this applies to you.

Harman Hay Publications Ltd, a company registered in England & Wales under company number 12599362, registered office: Regus, 1 Northumberland Ave, London, WC2N 5BW, UK.

Voting

The voting process has been changed this year in response to our panel's feedback about the competition and the need to minimise unconscious bias in voting.

Entries will be assessed by a Judging Panel and a shortlist will then be created for members to vote on. The final result will be determined by a score that combines the result from the judging panel and the result of the members' vote by Academy, Essentials, and Free Members.

Judges will be selected by technical competency and the Judging Panel will include representation of ethnicity, culture, gender, and disability. Judges will be announced before entry submission opens.

Every entry that meets the requirements for entry will be considered for shortlisting. See page 6 for the entry requirements.

The Judging Panel will use the following criteria to award a score to each entry:

- Design
- Patterning and cutting
- Stitching quality and finish
- Fit on a live model

These criteria will be judged in accordance with the Skill Level that an Entry is submitted into. Please see the Skill Levels on page 19 for more information on what is expected from an entrant at each level.

The score from the Judging Panel will be converted to a value out of ten.

The top twenty ranked Entries from each skill level will form a shortlist to be voted on by eligible members of Foundations Revealed. All other Entries, unless disqualified, will be able to be viewed on the Foundations Revealed website.

Anyone with a Free, Essentials, or Academy membership as of 5:00 p.m. GMT Wednesday 22nd February 2023 will be eligible to vote on the shortlist.

The percentage of the vote received by each Entry will be converted to a value out of ten.

The final score awarded to each Entry will be based on the score from the Judging Panel and the percentage of the vote received from members. The top three Entries in each skill level will be awarded the Prizes.

Foundations Revealed reserves the right to change the number of Entries on the shortlist according to the number of Entries received.

Harman Hay Publications Ltd, a company registered in England & Wales under company number 12599362, registered office: Regus, 1 Northumberland Ave, London, WC2N 5BW, UK.

Competition Timetable

Key Events	Dates and Times
Entries Open	Wednesday 30 th November 2022, 9:00 a.m. GMT
Entries Close	Wednesday 22 nd February 2023, 5:00 p.m. GMT
Entries on Site and Voting Opens	21 st April 2023, 6:00 p.m. BST
Voting Closes	Monday 8th of May 2023, 5:00 p.m. BST
Prize Winners Announced	Friday 19th of May 2023, 6:00 p.m. BST
Prizes Must be Claimed By	Friday 18 th of August 2023, 6:00 p.m. BST

Foundations Revealed reserves the right to make alterations to this timetable according to the number of Entries received.

What You'll Need to Enter

Entrants must be over 18 and you may enter anything from a single garment (such as a corset, skirt, or jacket) to an entire outfit, as long as it is for a human (see page 11 for restrictions on child models). Foundations Revealed's decision as to what constitutes a garment is final.

The garment(s) entered must be the work of the person(s) submitting them. The work does not have to be made new for the Competition; you may enter something you have made in the past that fits the Theme.

The Entry may or may not be historical in nature, but it must be on Theme.

Collaborations by up to three people are welcome. The skill level of the group is defined as the Skill Level of the member who was most involved in construction, or the most experienced member if it was an equal joint effort. All members of any winning group will be able to use the award logos, and any prizes will be split equally among all participants.

You must supply all the information requested on the entry form, including images and text, to qualify for judging. Any entry that does not fulfil these entry requirements will not be passed on to the judges for consideration for the shortlist.

Entries will be judged on what is submitted with the Entry, and no further correspondence will be entered.

Entries must comply with the [Website Terms and Conditions](#) and our [Diversity Statement](#). Any Entry that does not do so will be disqualified from entering.

Please DO NOT send garments themselves to us, as we cannot be held responsible for damage or loss that occurs as a result of attempting to do so. Any garment sent will not be returned.

The Entry Form

You will need to sign up for a free Foundations Revealed membership to enter if you do not already have a membership of any type, in order to access the form.

You'll need to fill out the following information to enter. Anything marked optional is not required to qualify for judging. All information will appear on your entry, unless noted otherwise.

- Name(s) of Maker(s)

This will be displayed on the website, and it may be a pseudonym.

- Legal Name

Required for our records and this will not be displayed on the website.

- Email Address

This will not be displayed on the website and will be used to contact Entrants about their prizes. This should match the email address associated with your Foundations Revealed account.

- Country of Residence

This will not be displayed on the Website.

- Skill Level

Skill Levels are given on page 19 of this guide.

- Name of Entry
- Homepage (Optional)
- Instagram (Optional)

Please give this as a link and not as a handle.

- YouTube (Optional)

Link to your YouTube channel if you run one.

- Thumbnail Image

See requirements on page 11.

- Upload Images

See requirements on page 10 and 11.

- Total Number of Images

Please give a numeric value for the total number of files attached (includes Thumbnail image).

- Video link (Optional)

See requirements on page 10.

- Outline the Design Concept

See requirements on page 9.

- List the Garment(s) Submitted

Please list the garment(s) you are entering for judging in this Competition.

- Outline the Construction

See requirements on page 9.

- What was it like to compete (Optional)
- Suggestions for next year's Theme (Optional)
 - This will not appear on your entry.
 - There is a twenty-word limit.
- Diversity monitoring (Optional)
- Consent
 - I confirm that I am a creative badass and will never again doubt myself or my talent and capability.
 - I agree to the Competition rules. If I have used a child as a model, I state that I am that child's parent or guardian, and the child is aged over 5.

Note: Your permission to use the text, images, and video on our website, and in marketing and promotion of Foundations Revealed, is granted by entering them, but the copyright to them remains your own. By submitting them, you confirm that all artists involved in their production grant permission for their use by us on our website and in all associated media.

Text

There are three written sections to be included in your entry. The text should help inform the judges about the criteria of design, patterning and cutting, stitching quality and finish, and fit.

We highly recommend that you get a head start on writing your text and don't leave it to the day of submission. This will give you more time to proofread your text before submitting, as we will not be able to make any corrections once your entry is submitted.

Please do not include URLs in your text as they will not format correctly.

Outline the Design Concept

The brief outline of the concept behind your entry in 250 words or less. This should cover your inspiration and how it relates to the Theme, as well as information on how you designed your entry. Examples of previous entries can be found on page 12 to give you an idea of the type of thing we are looking for.

List the Garment(s) You are Submitting

This is just a simple list of the garment(s) that make up your entry in 30 words or less. For example: chemise, corset, skirt.

Outline the Construction

This should be an overview of the construction of your entry in 250 words or less. You could discuss things like patterns, materials, and techniques you used, any challenges you overcame, and resources that helped you. Examples of previous entries can be found on page 12 to give you an idea of the type of thing we are looking for.

Images

Your entry should include:

1. One thumbnail (see page 11).
2. Up to six single images.
3. A video of up to 60 seconds in length may be substituted for ONE of the images, excluding the thumbnail image (optional).

In addition to this, the content must include:

- **At least ONE** of the images (or the optional video if you wish) must be a clear image showing the technical and/or construction details of the entry (see examples of past entries on page 12 to give you an idea of what we are looking for).
- **At least ONE** of the images (or the optional video if you wish) must be of your Competition entry worn by the person it was made for. This is to help judges evaluate fit (see examples of past entries on page 12 to give you an idea of what we are looking for).

If you wish to include a video, it should be hosted on a site such as YouTube, Wistia, or Vimeo, set to 'public', and the link supplied on the Entry Form.

Please name your images after yourself (e.g., firstnamelastname1, firstnamelastname2, etc.) so we can find them.

Restrictions on Images

Images cannot be included with your Entry unless you own them, have express written permission to use them, or they are in the public domain.

Composite images count as the number of images that have been combined (in other words, you can't circumvent the image limit by using image manipulation software to combine multiple images). Similarly, videos consisting of a slideshow of still images will be counted as multiple images.

Image size restrictions

The maximum file size is 1 MB and the allowed formats are .jpg, .jpeg, .png, and .gif. If you are not sure how to resize your images, we have made a video showing you how and it's available here:

<https://members.foundationsrevealed.com/competition/video/>

Nudity

Foundations Revealed has a global audience with diverse cultural sensibilities and varying legal frameworks as to what users are permitted to access on the internet. With this in mind, we will not post Competition images showing all or part of the intergluteal cleft, or the genitalia and its immediate area on the website. Nipples should be covered by pasties if they would otherwise be visible (including through sheer fabric).

Use of Child Models

You must be the legal guardian or parent of the child.

The child must be fully clothed, no underwear, no swimwear, etc., will be permitted.

No children under the age of 5 years old.

Any images submitted will be publicly viewable in perpetuity. You may, if you wish, blur the face of your child.

Image Content Specifications

Thumbnail

The thumbnail is the image used to link to your entry from the main Competition pages. The image should be in portrait orientation. Ideally, the image should be 640:940 pixels but a ratio of 2:3 will also be accepted.

The Construction Image

At least one of your images should show the quality of your work and finish that has gone into the garment's creation. A construction image is not just a closeup of the garment though. It should inform the viewer about the processes that went into the making of your entry.

Construction images could show, and are not limited to: seam stitching, application of decoration, pattern matching, flossing, padstitching, application of binding, stitched eyelets, applique, etc. Examples of photos from previous entries can be found on page 12.

Examples of Past Entries

There are so many different ways to write up your entry and photograph it that we recommend browsing [past entries](#) for ideas. In 2021, we received nearly six hundred entries on the theme of Once Upon a Time, so we selected a handful to show you here to give you an idea of what we are looking for in an entry. The following entries fulfil the entry criteria quite nicely and provide very useful information about design, patterning and cutting, stitching quality and finish, and fit on a live model for the judging process.

Please note that there have been some changes for 2023, and so things like the section to list the garments is not present in the 2021 entries. One important change relevant to the discussion here is that the section 'Outline the Story' has been renamed to 'Outline the Design Concept', but the content remains the same.

Agnieszka, Witch of the Valley – Apprentice

<https://members-foundationsrevealed.com/competitions/agnieszka-witch-of-the-valley/>

Jessica Fitch has created a fantastic, richly coloured fantasy outfit for a character out of a novel in her entry. In the 'Outline the Story', Jessica walks us through her design process by first telling us about Agnieszka, her inspiration taken from the theme, and the considerations she gave to interpreting the character to arrive at the final design.

In the 'Outline the Construction', Jessica lets us know that this outfit pushed her skill set, with the making of her first corset and the need to learn new techniques. This gives a great context in which to look at the lovely work she has done, as well as letting us know about the technical side of making the garment. We are also informed that a range of commercial patterns have been used to create the desired look, letting us know about the patterning and cutting.



Agnieszka, Witch of the Valley – Jessica Fitch

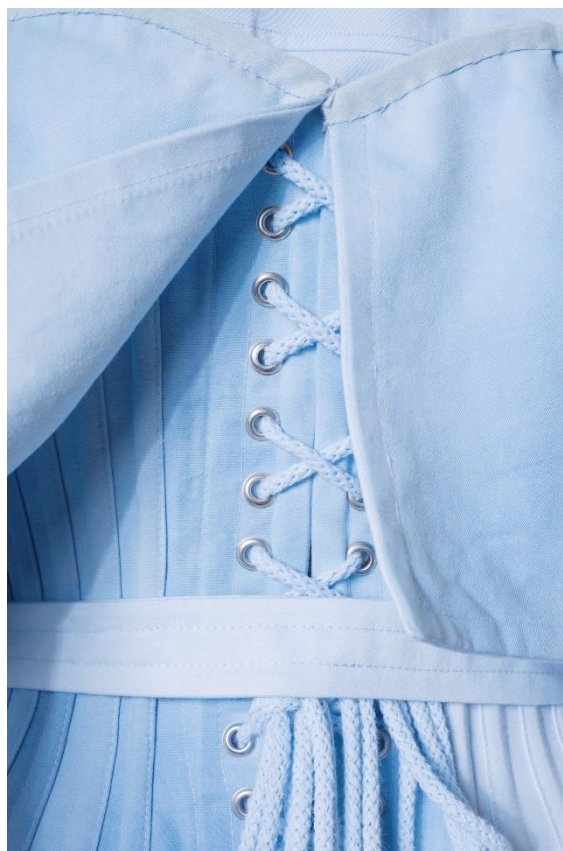
Jessica has included a number of full-length front and back images, including a couple without the shawl obscuring the fit of the pieces underneath. This means we get a really good look at how nicely the garments sit on the body. There's a couple of images that can be used as the construction image. The image of the shrug, shown here to the left, allows us to see how neatly the lining has been put in and topstitched, and how nicely the eyelets have been done, and makes for a great construction image.

Alice's Adventures in Cern – Intermediate

<https://membersFOUNDATIONSrevealed.com/competitions/alices-adventures-in-cern/>

Xenofon Dritsoulas' wonderfully modern take on corsetry fuses Alice in Wonderland with modern science. The 'Outline the Story' text clearly links the entry to the theme and explains the thought process that led to the design direction and unusual fusion of ideas. The notes under 'Outline the Construction' tell us where the corset pattern came from and give us information about the extra details that Xenofon added to the commercial pattern to turn it into corset/trench-coat hybrid. There's a good mix of information about the materials and techniques used, which greatly helps inform about the technical challenges involved in the project.

The images are a good mix of full-length shots, front and back, making it easy to observe the fit, and close-up shots. The image to the right clearly shows the stitching attaching the binding and the bone casings, and the insertion of the eyelets, making it a good choice for the construction image.



Alice's Adventures in Cern – Xenofon Dritsoulas

Divine Puffed Sleeves – Apprentice

<https://membersFOUNDATIONSrevealed.com/competitions/divine-puffed-sleeves/>



Divine Puffed Sleeves – Kristen Kiel

Kristen Kiel has created a wonderful, joyful entry with Divine Puffed Sleeves. In ‘Outline the Construction’, she has explained how she has taken the story of Anne of Green Gables and wondered, what if Anne did get that dress with puffed sleeves, as her inspiration for the design. Kristen also sets out her design intention of creating a dress that is functional, but with that little bit extra.

In the ‘Outline the Construction’, Kristen lets us know that she focused on plaid matching and grainline, and by telling us that there was barely enough fabric, we know that there was an extra challenge in doing so. We are also informed that a commercial base pattern was used with the patterning of the sleeves, taking six iterations to get the desired amount of puff, and that there was a design opportunity that turned out brilliantly.

There are plenty of full-length shots that show the fit of the dress. The close-up of the puffed sleeves fulfils the criteria nicely, showing us the pintucks that run across the upper part of sleeves well, and how neatly the upper part of the sleeves are gathered into the lower part.

Magrat's Green Dress – Apprentice

<https://membersFOUNDATIONSrevealed.com/competitions/magrats-green-dress/>

Stephanie Murison created a lovely, elegant medieval inspired gown for her entry. Under 'Outline the Story', Stephanie starts by linking her entry to the theme with how Terry Pratchett's Magrat provided inspiration, and then goes through the design process, letting us know about the reason behind the colour choice, the meaning of the embroidery, and why a fourteenth-century silhouette was chosen.



Magrats Green Dress – Stephanie Murison

The 'Outline the Construction' section lets us know that Stephanie drafted the kirtle from a book. There's information about some of the technical decisions made in constructing the dress, such as the linen used to reinforce the bodice and sleeves. There's also a bit of information about details that are not immediately obvious, such as the hand-made finger-loop braid lacing and hand sewing of the dress. This helps to flesh out the work involved in creating the entry. Finally, we get to know that the sleeves gave Stephanie a bit of a challenge.

The full-length shot allows us to observe the fit on Stephanie and there are a few images here that could qualify as the construction image. The image to above shows quite a few things. You can see how well the embroidery wraps around the wrist, the neatness of the buttonholes, and how smoothly the seams with the gores are. This makes it a very informative construction image.

Nøkken the Water Spirit – Experienced

<https://membersFOUNDATIONSrevealed.com/competitions/nokken-the-water-spirit/>



Nokken the Water Spirit – Salme V

Salme V chose to create a gorgeously embroidered eighteenth-century waistcoat for the 2021 competition. The design process is clearly outlined in the 'Outline the Story', explaining the tale about a shapeshifting water spirit and the spirit's appearance at a village, and thoughts on what such a being would wear to that event. The 'Outline the Construction' sections tells us that Salme self-drafted the pattern based on extant examples from the 1790s, using scientific illustrations and extant embroideries to curate a selection of personally meaningful plant motifs to embroider. This information tells us a lot about the thought, knowledge, and planning that went into making this garment.

Front and back views of the waistcoat are provided, so we can see how it fits the model. There are a couple of images here that can qualify as the construction image. The close-up of the embroidery, showing the shading and the fineness of the stitches in the embroidery, certainly qualifies as one of them. Salme has also captured the different stages of the fabric button making in the construction image show to the left. You can see the initial stage of the lovely embroidery on linen, the two-hole button used as the base, the careful cutting out of the embroidery, and then the sewing into a ball button. The depiction of all the stages in a single image makes for a wonderful construction image as well.

The Weaver Girl – Intermediate

<https://membersFOUNDATIONSrevealed.com/competitions/the-weaver-girl/>



The Weaver Girl – Cindy Chan

Cindy Chan created a beautiful and ethereal outfit based on The Cowherd and the Weaver for her entry. In the 'Outline the Story', Cindy describes why she has chosen the folktale as her inspiration for the theme, and then goes on to explain how she has translated key points of the story into her materials and design. The notes in 'Outline the Construction' tell us why Cindy Chan selected the materials she did and how she sourced them. There is also an insight into the fitting challenges Cindy experienced, and how she worked around them.

Again, the images are a great mix of full-length and close-up shots of the front and back, making it easy to observe the fit and the work that has gone into the making of the entry.

There are a couple of images here that can qualify as the construction image, both focusing on the lovely beadwork in her construction image. In the image to above you can clearly see the range of sequins and beads she has chosen to use to evoke the Milky Way, as well as the bead choice and placement for the magpie. The image informs the viewer about the thought and skill that went into constructing the embellishments, making it a great choice for the construction image.

Skill Levels

There are five skill levels: Beginner, Apprentice, Intermediate, Experienced, and Artisan. You may identify with statements across several skill levels. We suggest choosing the highest skill category where you agree with three or more of the statements.

Beginner:

This is one of your first ever projects. Sewing is a new skill to you: you are practicing your first stitches and learning basic information about fabric and how to read a pattern. Beginner projects might include a geometrically-patterned shirt/shift/chemise or tunic, an A-line or circle skirt, or, for the ambitious beginner, a simple corset with vertical seams.

This category is intended for those taking their first steps in sewing; more experienced stitchers using a new skill are not considered to be in this category.

Self-selection

- You have never sewn a full garment before, or have only undertaken one or two simple projects.
- You are still learning, or have recently learned, foundational skills, such as basic hand stitches and/or how to operate a sewing machine.
- You are still learning, or have recently learned, how to read the basic elements of a sewing pattern (such as piece numbers, notches, gathering lines, etc.).
- You are still learning, or have recently learned, basic terminology for fabric types.
- You have ideas about projects or designs, and are looking for guidance on how to approach them or where to start.

Apprentice:

You have made your first couple of successful projects and now you are practicing and refining core skills, such as employing different seam types, recognising and choosing fabrics, and making basic fit adjustments. Apprentice-level projects might include a simple waistcoat, a historical petticoat or skirt, or a corset with mainly vertical seams.

Self-selection

- You have completed two or three projects and you are looking for support and guidance as you start taking on additional challenges.
- You have learned basic stitches by hand and/or by machine, and you are now refining your use of different types of seams and seam finishes.
- You have learned how to read the basic elements of a sewing pattern and are practicing making basic adjustments to fit, either at the flat stage or in a mock-up.
- You recognise different basic fabric types and are learning more about their attributes and about how to research and choose appropriate fabrics for different projects.
- You can use your basic knowledge of sewing and design terminology to search for inspiration and information, and you are practicing applying this to your choice of sewing patterns and outfit elements.

Intermediate:

You have some experience completing projects on your own, you are confident with the basic skills, and you are ready to try a larger range of patterns, styles, and fabrics. You are experimenting with more complex pattern and fit issues: for example, you may be working on learning to fit a large bust or wide shoulders more confidently. You may be drafting your first patterns or are using more complex purchased patterns and adjusting them to suit your/your client's individual body. Intermediate projects might include historical dresses with multiple pieces and embellishments, fitted trousers, or corsets with inset gores and gussets or unusual panel shapes.

Self-selection

- With appropriate support, you feel ready to take on multi-part projects or challenging individual garments.
- You are a confident stitcher (by hand and/or machine), and know how to apply different stitches and seam types to garments to improve fit, drape, and/or stability.
- You have experience in adjusting patterns to fit an individual body and may be experimenting with drafting or draping patterns from scratch.
- You are confident choosing materials for your projects, and you may be experimenting with new or more challenging fibres or weave types and/or with fabric treatments and adjustments (e.g., using interfacings, starch, dyes, pad-stitching, etc.).
- You know where to look for inspiration, research, and advice, and you are confident using this knowledge to design and plan projects.

Experienced:

You are honing, refining, and developing your skills and knowledge. You are beginning to create your own patterns, either by drafting or draping from scratch, or by adapting historical patterns for your own use. You are confident in adjusting commercial patterns and fitting mock-ups. You are willing to be ambitious with more challenging fabrics and techniques, and may be branching out into a specific area of study, such as tailoring, fabric manipulation, or embellishment. You may be thinking about setting up a business or teaching your first class. Experienced projects might include multi-part historical outfits or corsets that use unusual shapes or challenging fabrics, or that require particularly careful fitting or complex construction techniques.

Self-selection

- You feel ready to take on ambitious or experimental garments and multi-part projects, and are looking for ways to further challenge yourself.
- You are experienced in choosing how and when to apply a range of construction techniques to different garments and challenges, and you are learning to design projects to suit your preferred working style and methods.
- You are confident in adjusting historical or purchased patterns to suit an individual body, and you are able to draft or drape your own basic patterns to suit your design plans.
- You are confident choosing and adjusting materials to suit your needs, and you may be learning to work with a specialist set of materials for particular projects.
- Your own design sense and/or research are a significant guiding element in your projects, and you may be working towards specialist knowledge in a particular area, such as tailoring.

Artisan:

You may or may not choose to be a professional maker, but you have the necessary skills and experience. You have a distinct personal style or area of interest that guides your choice and development of projects. You feel confident to create new designs and patterns and explore and apply new skills, and you may also be doing original research of your own or developing new techniques. Artisan projects might include reconstructions of existing historical garments or fashion plates, technically complex garments such as riding habits or tailored jackets, or corsets involving original patterns, challenging fit requirements, and/or complex construction techniques.

Self-selection

- You confidently take on ambitious projects and have the skills to experiment at a high level with new techniques and garment types.
- You know what working methods and techniques suit you best and how to use this to your advantage as you take on new projects. You may be using your experience to help you experiment with new techniques or branch out into new skill areas.
- You are confident in developing patterns for your own use, and you may be experimenting with unusual shapes, extreme silhouettes, or complex fabric manipulation in your drafting and/or draping projects.
- You are confident researching, choosing, and working with a range of materials, and you may be doing original research or experimentation to expand how you use and manipulate fabric attributes, such as drape, structure, and texture, within your projects.
- Your own design sense and/or research guides and informs your projects, and you may be working towards sharing specialist knowledge with others.

The Legal Bit

This Competition is administered by Foundations Revealed, which is owned and run by Harman Hay Publications Ltd of Regus, 1 Northumberland Avenue, London, WC2N 5BW, UK.

1. Competition Entries

1.1. All Entries must meet the Theme for the year and be submitted in accordance with the rules, as published at [FoundationsRevealed.com](https://foundationsrevealed.com). Entries which do not meet the Theme and/or are not in accordance with the rules will be disqualified.

1.2. Any Entries that do not comply with the Foundations Revealed DICE statement <https://members.foundationsrevealed.com/diversity/> and Website Terms and Conditions <https://members.foundationsrevealed.com/terms/> will be disqualified and will not appear in the showcase.

1.3. Only one entry per person. Multiple Entries will be disqualified.

1.4. Automated Entries, bulk Entries, or third-party Entries will be disqualified.

1.5. No purchased, rented, or inherited items may be entered. The garment(s) entered must be the work of the person(s) submitting them. The work does not have to be made new for the Competition; you may enter something you have made in the past that fits the Theme.

1.6. Entries must be entered into one of the available Skill Levels, see clause 4 for further details. Any entry which is deemed to have been entered into the incorrect Skill Level will be moved at the discretion of Foundations Revealed. Where possible, entrants will be notified where such as change has been made.

1.7. You may enter anything from a single garment (such as a corset, jacket, or skirt) up to a full outfit. Entries must be for a human being.

1.8. All Entries will be uploaded to our Website.

1.9. Entries may be used in future promotions for Foundations Revealed. We reserve the right to continue to display your entry on the site to celebrate your work and demonstrate what the Competition is about.

2. Entrants

2.1. Entrants must be over eighteen (18) years old.

2.2. As a minimum, a free membership to Foundations Revealed is required, no purchase necessary.

2.3. Directors, employees, or contractors of Harman Hay Publications Ltd. may enter for fun, but their Entries will not be eligible for voting, judging, or awarding of any prizes.

2.4. Writers for Foundations Revealed are welcome to enter, but they must not enter a garment or outfit that has been the major feature of an article or articles written for us.

2.5 Members of the Judging Panel are not eligible to enter the Competition.

2.6. Collaborations by up to three people are welcome. The skill level of the group is defined as the skill level of the member who was the most involved in construction, or the most experienced member, if it was an equal joint effort. All members of any winning group will be able to use the award logos, and any prize subscriptions will be split - for example, six months each for a two-person entry, when winning a year's subscription.

3. Dates

3.1. The following dates will apply to this Competition:

Key Events	Dates and Times
Entries Open	Wednesday 30 th November 2022, 9:00 a.m. GMT
Entries Close	Wednesday 22 nd February 2023, 5:00 p.m. GMT
Entries on Site and Voting Opens	21 st April 2023, 6:00 p.m. BST
Voting Closes	Monday 8 th of May 2023, 5:00 p.m. BST
Prize Winners Announced	Friday 19 th of May 2023, 6:00 p.m. BST
Prizes Must be Claimed By	Friday 18 th of August 2023, 6:00 p.m. BST

Dates may be subject to change depending on volume of Entries received.

4. Skill Levels

4.1 Beginner: This is one of your first ever projects. Sewing is a new skill to you: you are practicing your first stitches and learning basic information about fabric and how to read a pattern. Beginner projects might include a geometrically-patterned shirt/shift/chemise or tunic, an A-line or circle skirt, or, for the ambitious beginner, a simple corset with vertical seams.

This category is intended for those taking their first steps in sewing; more experienced stitchers using a new skill are not considered to be in this category.

4.2 Apprentice: You have made your first couple of successful projects and now you are practicing and refining core skills such as employing different seam types, recognising and choosing fabrics, and making basic fit adjustments. Apprentice-level projects might include a simple waistcoat, a historical petticoat or skirt, or a corset with mainly vertical seams.

4.3 Intermediate: You have some experience completing projects on your own, you are confident with the basic skills, and you are ready to try a larger range of patterns, styles, and fabrics. You are experimenting with more complex pattern and fit issues: for example, you may be working on learning to fit a large bust or wide shoulders more confidently. You may be drafting your first patterns or are using more complex purchased patterns and adjusting them to suit your/your client's individual body. Intermediate projects might include historical dresses with multiple pieces and embellishments, fitted trousers, or corsets with inset gores and gussets or unusual panel shapes.

4.4 Experienced: You are honing, refining, and developing your skills and knowledge. You are beginning to create your own patterns, either by drafting or draping from scratch, or by adapting historical patterns for your own use. You are confident in adjusting commercial patterns and fitting mock-ups. You are willing to be ambitious with more challenging fabrics and techniques, and may be branching out into a specific area of study, such as tailoring, fabric manipulation, or embellishment. You may be thinking about setting up a business or teaching your first class. Experienced projects might include multi-part historical outfits or corsets that use unusual shapes or challenging fabrics, or that require particularly careful fitting or complex construction techniques.

4.5 Artisan: You may or may not choose to be a professional maker, but you have the necessary skills and experience. You have a distinct personal style or area of interest that guides your choice and development of projects. You feel confident to create new designs and patterns and explore and apply new skills, and you may also be doing original research of your own or developing new techniques. Artisan projects might include reconstructions of existing historical garments or fashion plates, technically complex garments such as riding habits or tailored jackets, or corsets involving original patterns, challenging fit requirements, and/or complex construction techniques.

5. Judging

5.1 The Judging Panel will be selected by technical competency. Judges will be selected by technical competency and the Judging Panel will include representation of ethnicity, culture, gender, and disability. Judges will be announced before entry submission opens.

5.2 The Judging Panel will use the following criteria:

- Design
- Patterning and cutting
- Stitching quality and finish
- Fit on a live model

6. Winners

6.1. All Entries submitted that meet the criteria in clause 1 and clause 8 will be considered for shortlisting.

6.2. The Judging Panel will assign each entry a score using the criteria in clause 5. The top twenty Entries from each skill level based on this score will form the shortlist.

6.3. The shortlist will be voted on by eligible members of Foundations Revealed. Anyone with a Free, Essentials, or Academy tier membership as of 5:00 p.m. GMT Wednesday 22nd February 2023 will be eligible to vote.

6.4. Each entry will receive a final score based on the result from the judging panel and the percentage of the public vote received. The three highest Entries in each category will be Winners.

6.5. The shortlisted Entries and the Winners will be announced in a live online broadcast, which will be advertised in advance and will be available for viewing afterwards.

6.6. The shortlisted Entries and Winners will be announced on the website including details of name, social media handles (if provided), and general location.

6.7. Prize Winners will be contacted by email soon after the announcement to arrange delivery of prizes.

6.8. The selection of Winners is final, and no correspondence will be entered into.

7. Prizes

7.1. Prizes are awarded in each Skill Level.

7.2. First Place

- A US\$400 gift certificate for the online store(s) of their choice.
- One year free Academy membership to Foundations Revealed.
- A Special 'Winner' icon to place on their website, blog, or member's profile.

7.3. Second Place

- A US\$200 gift certificate for the online store(s) of their choice.
- Six months free Academy membership to Foundations Revealed.
- A special '2nd Place' icon to place on their website, blog, or member's profile.

7.4. Third Place

- A US\$100 gift certificate for the online store(s) of their choice.
- Three months free Academy membership to Foundations Revealed.
- A special '3rd Place' icon to place on their website, blog, or member's profile.

7.5. Shortlisted Entries other than first, second, and third place

- Three months free Library Pass access to the Foundations Revealed website.

7.6. Prizes must be claimed within three calendar months of the announcement. Prizes claimed after this date will be forfeit.

7.7 Prizes are non-exchangeable, non-transferable, and are not redeemable for cash or other prizes.

7.8 Gift certificates may be selected by the winner subjected to conditions, which include but are not limited to: that the provider must accept payment from a UK company and must have Gift Cards for sale online without special arrangements being made by email. The gift certificate may be split up to three times (two for 3rd prize) as long as each voucher is worth a minimum of US\$50.00.

7.7. Monetary values of prizes will be translated into local currency rates where appropriate, using the prevailing closing exchange rate on the date of the announcement.

7.8. Harman Hay Publications Ltd is not responsible for paying taxes on any prizes awarded.

8. How to Enter

8.1. All Entries must be made using the Entry Form.

8.2. Your Entry must contain:

- All details requested on the Entry Form, except those that are marked optional.
- One Thumbnail image.
- Up to six images.
- A video of up to 60 seconds in length can be substituted for one of the images (optional).
- A text description, of 250 words in total or less, detailing the design concept.
- A list of all garment(s) being entered into the Competition.
- A text description, of 250 words in total or less, detailing the construction of the entry.

8.3. You will have the optional opportunity to include a link to an outside online source, such as your website, blog, and/or YouTube channel. You may use this link to lead to more details about your journey through the project if you wish, but this is optional. We welcome the opportunity simply to link to your work and help you to promote your work or business, providing that it does not represent substantial direct Competition with the services provided by Harman Hay Publications Ltd (to be decided at our discretion).

8.4. At least one of the images (or the optional video if you wish) must be a clear image showing the technical and/or construction details of the entry, as outlined in the information pack.

8.5. Composite images count as the number of images that have been combined, and videos containing slideshows of images count as multiple images and are not permitted (in other words, you cannot circumvent the image limit by using image or video manipulation software to combine multiple images).

8.6. Images showing intergluteal cleft or the genitalia and its immediate area of the model will not be posted on the website. Nipples must be covered by pasties if they would otherwise be visible.

8.7. The use of child models is subject to the following conditions:

- You must be the legal guardian or parent of the child.
- The child must be fully clothed, no underwear, no swimwear, etc., will be permitted.
- No children under the age of 5 years old.
- Any images submitted will be publicly viewable in perpetuity. You may, if you wish, blur the face of your child.

8.8. Inspiration images cannot be included with your Entry unless you own them, have express written permission to use them, or they are in the public domain.

8.9. If you wish to include a video, it should be hosted on a site such as YouTube, Wistia, or Vimeo, set to 'public', and the link supplied on the Entry Form. Please do not submit video files with the entry form.

8.10. DO NOT send the garments themselves to us – we cannot be held responsible for damage or loss that occurs as a result of attempting to do so. Any garments sent will not be returned.

9. Use of Images

9.1. In submitting your entry for the Competition, you grant Harman Hay Publications Ltd permission and an irrevocable licence to use the text, images, and videos on our websites, and in marketing and promotion of our websites and services. Copyright is retained by the original owners.

9.2. You confirm that all artists and writers involved in the production of any such text, images, or videos grant permission for their use by us on our website and in all associated media.

10. Governing Law

10.1. This Competition and any dispute or claim arising out of or in connection with them (including non-contractual disputes or claims) are governed by and construed in accordance

with English law and will be subject to the exclusive jurisdiction of the courts of England and Wales.